



**Metcalfe Mtungwazi**  
062 676 2638  
metcalfe.mtungwazi@archonint.com

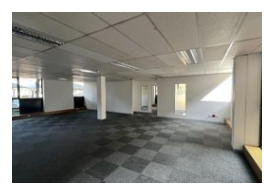
Contact Archon International  
Properties Johannesburg

011 568 4341

Ground Floor  
The Place  
1 Sandton Drive  
Sandton  
2196



Web Ref CL138



R115 per m<sup>2</sup>

Gross Monthly Rental R20,467 Excl. VAT

0 0

### OFFICE TO LET IN CONSTANTIA OFFICE PARK

The unit offers a basic office fit-out with 3 partitioned offices and an open plan section.

Constantia Office Park offers a variety of amenities and services, including a Virgin Active Gym, hotel, EXP Medical Centre, Dis-Chem, Shell Garage, Green & Gold and Bossa for all tenants to enjoy.

The Park is located with easy access to and from the N1 highway via 14th Avenue interchange. It also benefits from excellent

### Features

<b>Building Name</b>	Constantia Office Park		
<b>Zoning</b>	Commercial		
<b>Interior</b>		<b>Exterior</b>	<b>Sizes</b>
Air Conditioning	Yes	Security	Yes
Power 3 Phase	Yes	Parking Ratio	4 bays / 100 m <sup>2</sup>
			Floor Size
			117m <sup>2</sup>

