



**Confidence Maluleke**  
0115684341  
confidence.maluleke@archonint.com

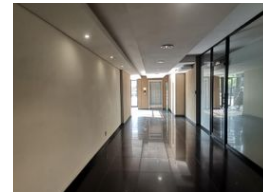
Contact Archon International  
Properties Johannesburg

011 568 4341

Ground Floor  
The Place  
1 Sandton Drive  
Sandton  
2196




Web Ref CL107



R95 per m<sup>2</sup>

Gross Monthly Rental R29,735 Excl. VAT

 2  10

Penthouse Office TO LET in Rivonia

Spacious second floor penthouse office with natural light available TO LET in the Rivonia node of Sandton - 354 Rivonia Boulevard. Lillipark Office Park is well located in close proximity of the main arterial routes such as Rivonia Rd M9 & the N1. There are ample retail stores on Rivonia Rd for employee & client convenience. Couple this with the excellent landscaping & you have your next business address.

This penthouse has separate electricity billing & water is billed by the body corporate on a pro rata occupancy basis.

Features

<b>Building Name</b>	Lillipark Office Park				
<b>Zoning</b>	Commercial				
<b>Interior</b>		<b>Exterior</b>		<b>Sizes</b>	
Air Conditioning	Yes	Security	Yes	Floor Size	313m <sup>2</sup>
Power 3 Phase	Yes	Basement Parkings	2		
		Open Parking Bays	10		
		Parking Ratio	3 bays / 100 m <sup>2</sup>		

Extras

Central A/C & Heating Built-in Kitchen Appliances Covered Parking 24 Hour Access

