



Metcalfe Mtungwazi
062 676 2638
metcalfe.mtungwazi@archonint.com

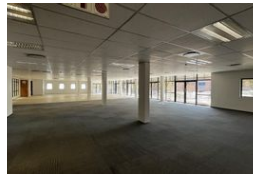
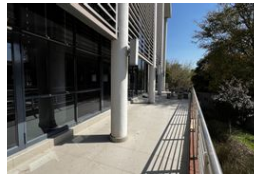
Contact Archon International
Properties Johannesburg

011 568 4341

Ground Floor
The Place
1 Sandton Drive
Sandton
2196



Web Ref CL235



R120 per m²

Gross Monthly Rental R67,920 Excl. VAT

 0  0

Prime Office To Let in Rivonia, Sandton

Discover a prestigious workspace at The Grid, an A-grade office building in the heart of Rivonia, Sandton. This modern, four-storey building features a sleek facade, space-efficient floor plates, and a spacious atrium that enhances the open and airy feel of the environment. The ground floor boasts a large patio, perfect for informal meetings or relaxing breaks.

Strategically located on Rivonia Road, The Grid offers prime signage opportunities, ensuring your business stands out. The building's position provides easy access to the N1 Highway, making commutes effortless for both employees and clients.

Designed with convenience in mind, The Grid offers ample parking and 24-hour security, ensuring peace of mind for all occupants.

Features

Zoning Commercial

Interior

Air Conditioning Yes
Power 3 Phase Yes

Exterior

Security Yes
Parking Ratio 4 bays / 100 m²

Sizes

Floor Size 566m²

