



Metcalfe Mtungwazi
062 676 2638
metcalfe.mtungwazi@archonint.com

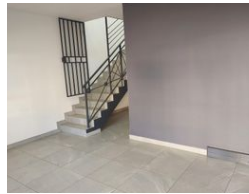
Contact Archon International
Properties Johannesburg

011 568 4341

Ground Floor
The Place
1 Sandton Drive
Sandton
2196



Web Ref CL185



R72.2 per m²

Gross Monthly Rental R39,000 Excl. VAT



Warehouse to Let in Meadowdale

Introducing an exceptional opportunity nestled within a strategically positioned unit within a secure and expansive industrial park, boasting just 13 neighboring units. Offering the convenience of dual access gates, this industrial park ensures smooth ingress and egress for delivery trucks and vehicles, facilitating uninterrupted workflow for your operations.

Encompassing 540sqm, this immaculately maintained unit features a sophisticated reception area that sets a professional tone for your business, seamlessly leading into thoughtfully designed offices and warehouse access. The warehouse, spanning 309sqm, is well-equipped with an on-grade roller door, allowing for seamless loading and unloading. With an impressive height to

Features

Zoning Industrial

Sizes
Floor Size 540m²