



**Confidence Maluleke**  
0115684341  
confidence.maluleke@archonint.com

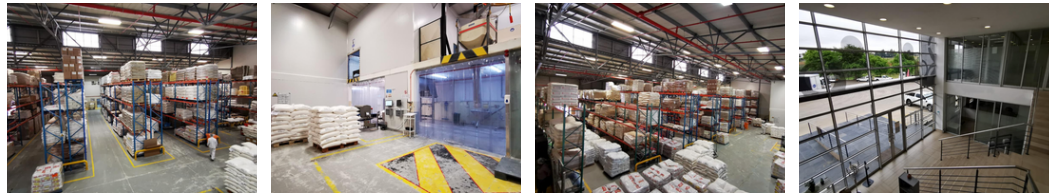
Contact Archon International  
Properties Johannesburg

011 568 4341

Ground Floor  
The Place  
1 Sandton Drive  
Sandton  
2196



Web Ref CL123



R75 per m<sup>2</sup>

Gross Monthly Rental R172,200 Excl. VAT



### Industrial Warehouse to LET in Corporate Park

2 296sqm warehouse space available to rent in Corporate Park from 1 April 2023. The warehouse is located in a well located area with access to the N1. The Park itself is secure with access control and 24-hour security.

### Features

**Zoning** Industrial

**Sizes**

Floor Size 2,296m<sup>2</sup>

