



**Metcalfe Mtungwazi**  
062 676 2638  
metcalfe.mtungwazi@archonint.com

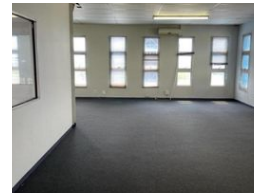
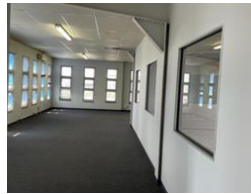
Contact Archon International  
Properties Johannesburg

011 568 4341

Ground Floor  
The Place  
1 Sandton Drive  
Sandton  
2196



Web Ref CL161



R89 per m<sup>2</sup>

Gross Monthly Rental R49,000 Excl. VAT

 0  0

## 550m<sup>2</sup> Warehouse To Let in Halfway House

Mini Warehouse to let in Halfway House

Discover prime warehouse/showroom space for lease in the vibrant Waterfall area. This modern 550m<sup>2</sup> facility is conveniently located within the secure and well-maintained Waterfall Crossing Industrial Park, offering 24/7 security for peace of mind.

Positioned strategically at the corner of Le Roux Avenue and James Crescent in Midrand, this property boasts four available units, all recently renovated and ideally situated at the park entrance.

Each unit features a spacious double-volume layout with a container height roller shutter door for seamless access. The interior comprises a sleek reception area, compact offices, storage facilities, separate ablution amenities, and a kitchen. Additionally, a

### Features

**Zoning** Industrial

**Sizes**

Floor Size 550m<sup>2</sup>