



Metcalfe Mtungwazi
062 676 2638
metcalfe.mtungwazi@archonint.com

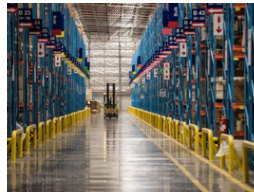
Contact Archon International
Properties Johannesburg

011 568 4341

Ground Floor
The Place
1 Sandton Drive
Sandton
2196



Web Ref CL124



R65 per m²

Gross Monthly Rental R2,503,475 Excl. VAT

 0  0

A-Grade Logistics Warehouse To Let, Coega

This A-Grade modern logistics fulfilment centre is to let and located close to Wells Estate within the secure Coega Special Economic Zone.

The property offers multiple docked and on-grade access points into the warehouse with generous yard space for truck reticulation and storage. The facility was originally designed to the highest specification for GM Motors and is within 25 minutes from the Gqeberha Harbour and Chief Dawid Stuurman International Airport.

Property Details:
Land Size: 78 600 sqm
GLA: 38 515 sqm
Available bulk for building expansion: 8 000 sqm
Power - Main amps: 2 290 Amps
Office and ancillary space: 1 400 sqm
Warehouse: 36 815 sqm
Pump-house: 300 sqm
Roof height: 10m within the central grid
Number of Roller Shutter doors: 16, offering dock levellers
Warehouse floor: FM2 Special Floor

Features

Zoning Industrial

Interior

Floor Loading Cap. 4 Tn/m²
Air Conditioning Yes
Power 3 Phase Yes
Power Amps 2290

Exterior

Security Yes
Parking Ratio 4 bays / 100 m²

Sizes

Floor Size 38,515m²
Land Size 78,600m²
Building Height 10m

