

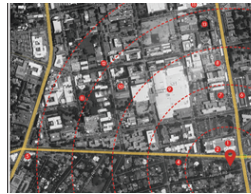


Metcalfe Mtungwazi
062 676 2638
metcalfe.mtungwazi@archonint.com

Contact Archon International
Properties Johannesburg

011 568 4341

Ground Floor
The Place
1 Sandton Drive
Sandton
2196



Oxford Maine



Building (1)
POA
Size from 201m² to 7,986m²

OXFORD MAINE - an exquisite new mixed-use development | Rosebank

Oxford Maine comprises of 7 986sqm P-Grade Sectional Title Offices (can accommodate office suites ranging from 201sqm to 7 986sqm), 1 093sqm of trendy and exciting restaurant and retail space, a 200 key international hotel and 5 spacious duplex penthouses* each with their own view deck and infinity pool.

*More information regarding the penthouses available upon request.

By blending luxury, operational efficiency and comfort in a contemporary way, Oxford Maine utilises cutting-edge technology and green building elements to create a dynamic sense of modern luxury and class. High living and eco-consciousness are not mutually...

Features

- ✓ Services Office Space
- ✓ Water & power back-up systems
- ✓ Green efficiency
- ✓ Panoramic city views
- ✓ Roof top pool deck
- ✓ High end restaurants
- ✓ Ample visitor parking bays
- ✓ High-tech security systems